

**Task A (Web Authoring: 16 Marks)**

In this task you will type the HTML code given below in a text editor to create a Web page. After viewing the output, you will be expected to make modifications as directed.

```

1 <HTML>
2 <HEAD>
3 <TITLE>Info and Comm Tech</TITLE>
4 </HEAD>
5 <BODY><center>
6 <H1>COMPUTER SYSTEM</H1>
7 <H2>The computer system is made up of</H2>
8
9     <P>Hardware</P>
10    <P>Software</P>
11    </center>
12 <UL>
13 <H2>The Hardware Component</H2>
14 <P>The major hardware components of a PC include:</P>
15 <UL>
16     <Li>The Keyboard
17     <Li>The Mouse
18     <Li>The Monitor
19     <Li>The System Unit
20 </UL>
21 <H2>The Software</H2>
22 <P>Software is made up of:</P>
23
24
25 </UL>
26 </BODY>
27 </HTML>

```

- (a) Type the above HTML code (without the line numbers) in your favorite editor or HTML editor and save it as **ComputerSystem.txt** in your candidate folder. (2 marks)
- (b) State the name of text editor used Notepad (1 mark)
- (c) Create an HTML file by saving the code typed above with the file name **ComputerSystem.html**.  
Open the HTML output file created ( see your candidate folder) and study the web page. (1 mark)  
Make the following updates to your web page by modifying the HTML code.
- (d) Modify line 6 so that the header is underlined. Write down the modified line 6 below  
<H1><u>COMPUTER SYSTEM</u></H1></u> (2 marks)
- (e) Modify lines 9 and 10 to bold characters. Write the modified lines below.  
<P><b>Hardware</b></P></b>  
<P><b>Software</b></P></b> (3 marks)
- (f) Add statements after line 23 to include the following information  
**System Software**  
1. Operating System  
2. Language Translator  
3. Device Driver  
4. Utility Software  
**Application Software:** Spreadsheet, word processor, Presentation, Database. (5 marks)
- (g) Print the updated files: **ComputerSystem.txt** and a screen shot of the **ComputerSystem.html**. (2 mark)

**Task B (Database: 16 Marks)**

- (a) Open the Fruit Market database found in the Candidate folder.(click No to block unsafe expressions)
- (b) Create the table given below and save it as **Type**.

Type ID	Type
1	Fruit Shop
2	Health Food Store
3	Hotel
4	Restaurant
5	Individual

Indicate the table properties you have used in designing the table above.

Field name	Data type
Type ID	Auto Number
Type	Text

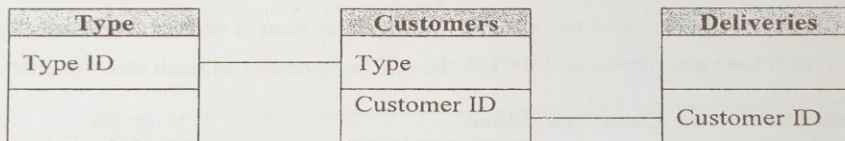
Set **Type ID** as the primary key of the table.

(5 marks)

Close the table you have created.

- (c) Create the relationship between the tables Type, Customers and Deliveries.

The relationship description is shown below (Only fields used in the relationship are shown).



Capture the screen that shows the relationship window and paste it in a word processor document and save it as **Capture**.

(3 marks)

- (d) By making a query, write out the First Names of all the customers, their towns and their respective delivery routes. The customers needed are those who are either in Douala or in Kribi. Save the query as **Customers Details**.

Represent your query as shown in the design view in the table below

Field	First Name	Town	Route	
Table	Customers	Customers	Deliveries	
Criteria		"Douala"		
or :		"Kribi"		



Present the result of your query in the space below.

First Name	Town	Route
William	Souala	5
Plany	Souala	5
Trida	Kabi	5
Plany	Souala	4
Joseph	Souala	3

(5 marks)

- (f) Create a **form** to enter information into the **Customers** table. Capture the screen showing the form in the Datasheet view and paste it in the Capture document created in (c). Print the **Capture** file. (3 marks)

**Task C (Spreadsheet: 18 Marks)**

This question is based on data in a workbook named **Shopping** found in the candidate folder. The workbook is made of two sheets **CUS** and **Items**. The information in these sheets is based on customers purchase made from an equipment store. The details of items (*Item name* and *Unit price* per item is shown in the **Items** sheet while the details of customers' purchase are shown in the **CUS** sheet. ( i.e. quantity of each item bought).

Open the **Shopping** Workbook found in the **Candidate** folder.

- (a) Insert all borders in the cells over the range **A1:H16** and merge the cells in the range **F13:H14**. (2 marks)

- (b) Type a formula in F2 that calculates the total amount for items collected by Martha.

(Note that the unit price of items is found in **Items** sheet). Write out the formula in the line below.

$=B2 * \text{Items}!C2 + C2 * \text{Items}!C5 + D2 * \text{Items}!C3 + E2 * \text{Items}!C4$  (2 marks)

- (c) Modify the formula you have written above (using absolute reference) to enable you copy through the formula to F12. Write out the formula in the space below.

(1 mark)

Copy the formula in F2 through the cells that follow up to F12.

- (d) Write out the formula you now have in F12.

(1 mark)

- (e) The discount made to customers is based on the total amount. 3% discount is allocated to a customer whose total amount is less than 15000 and 5% otherwise. Type a formula in G2 that will compute the discount given to Martha. Write the formula in G2 below.

$=\text{IF}(F2 < 15000, 3\% * F2, \text{IF}(F2 > 15000, 5\% * F2))$

(2 marks)

Copy the above formula through the cells that follow up to G12.

- (f) Type a formula in H2 that computes the Net Total for Martha. Note that Net Total is the amount to be paid after deducting the discount from Total Amount. Write the formula in H2 below.  
$$= F2 - G2$$
 (1 mark)  
Copy the above formula through the cells that follow up to H12.
- (g) Compute the total number of each item bought (see row 13). Write the formula in B13 below.  
$$= \text{Sum} (B2 : B12)$$
 (1 mark)
- (h) Compute the total amount realized for each item bought (see row 14). Write the formula in C14 below.  
$$= B13 * Items ! C2$$
 (2 marks)
- (i) Compute the maximum number of each item bought (see row 15). Write the formula in E15 below.  
$$= \text{Max} (F2 : E12)$$
 (1 mark)
- (j) Compute the minimum number of each item bought (row 16). Write the formula in D16 below.  
$$= \text{Min} (B2 : D12)$$
 (1 mark)
- (k) Insert a column chart in Items sheet of Unit Price against Material. Set the chart title to Equipment and also label the axes accordingly. Arrange the chart position to fit in one page with the table. (4 marks)
- Print the entire shopping workbook with all the two sheets.