

EXAMINATIONS COUNCIL OF ZAMBIA

Examination for General Certificate of Education Ordinary Level

Woodwork

6030/2

Paper 2 Practical Test

Friday

5 AUGUST 2016

Additional materials:
As listed in Instructions to Supervisors

Time: 3 hours

Mark: 100

Instructions to Candidates

- 1 Check that the following materials have been provided:
 - One piece 120mm long, planed to 34mm by 34mm thick.
 - One piece 160mm long, planed to 60mm by 21mm thick.
 - One piece 120mm long, planed to 40mm by 18mm thick.
 - One piece 180mm long, planed to 75mm by 18mm thick.
 - One piece 150mm long planed to 75mm by 18mm thick.One 50mm steel butt hinge with appropriate $\frac{3}{4}$ " steel screws.
- 2 A second supply of wood is Not allowed. If you make a mistake, do your best to work as near to the details given in the drawing as possible. All pieces of wood should be finished to the correct lengths and their ends neatly trimmed with a plane.
- 3 Attempt to finish all parts of the test.
- 4 You may use any of the ordinary hand tools but the use of adhesives, glass paper, files, rasps and scrapers is not allowed.
- 5 Additional marks may be gained if the work is rightly cleaned off with a finally set smoothing plane before being finally assembled.
- 6 Write your name and examination number boldly and clearly on each of the pieces of wood in capital letters and number 6mm high. Attach a tag with your name in full, examination number, centre number and centre name.
- 7 Assemble your work and put in a polythene plastic bag before handing it to the Supervisor.
- 8 Any dimensions omitted are left to you discretion.

Information for Candidates

- 1 This paper consists of one practical question.
- 2 All dimensions are in millimetres.

PRACTICAL TEST

INSTRUCTIONS TO CANDIDATES

The pictorial drawing in **Figure 1** shows a drop-leaf sofa table with part of the top removed and **Figure 2** shows the orthographic projection of a drop-leaf sofa table.

You are required to:

- (a) make the part enclosed in the circle.
- (b) join Part **A** to Part **D** by means of an appropriate joint.
- (c) apply the shaping as indicated on Part **E**.

The following pieces of wood, previously planed are to be used:

Part **A** One piece 120mm long, planed to 34mm by 34mm thick.

Part **B** One piece 160mm long, planed to 60mm by 21mm thick.

Part **C** One piece 120mm long, planed to 40mm by 18mm thick.

Part **D** One piece 180mm long, planed to 75mm by 18mm thick.

Part **E** One piece 150mm long planed to 75mm by 18mm thick.

One 50mm steel butt hinge with appropriate $\frac{3}{4}$ " steel screws.

WORKING PROCEDURE

- (a) Mark out all the joints and cut them.
- (b) Join Part **A** to **C** by means of lapped single dovetail.
- (c) Join Part **A** to Part **E** by means of an hinge.
- (d) Join Part **B** to Part **D** by means of bridle joint.
- (e) Joint parts **A** and **D** by means of appropriate joint.

ASSEMBLY PROCEDURE

Fit the joints. Do not force the joints. Assemble the work, make sure that you dismantle your work before putting them in the bag.

EXAMINATIONS COUNCIL OF ZAMBIA

Examinations for General Certificate of Education Ordinary Level

Woodwork

6030/2

Paper 2 Practical Test

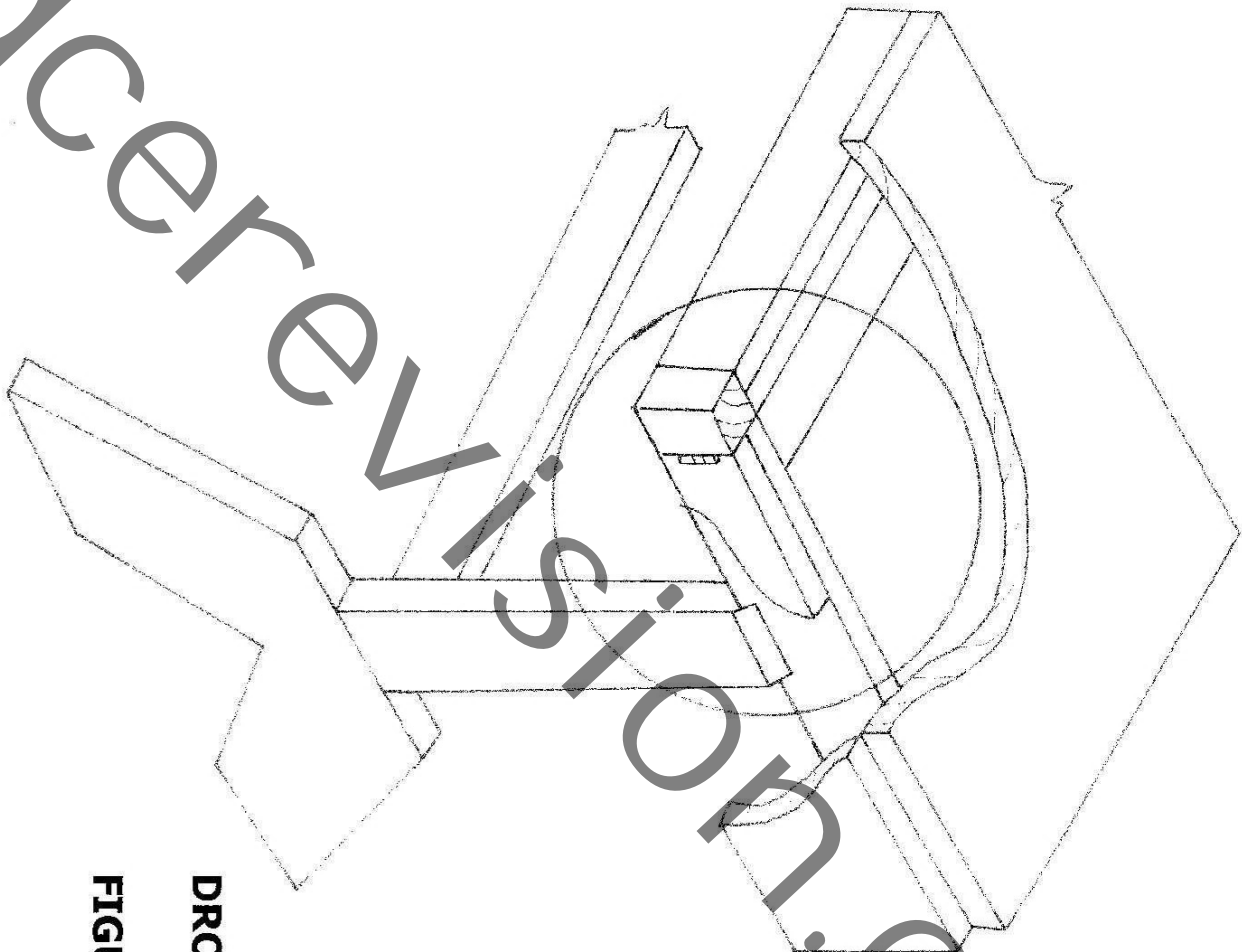
Friday

5 AUGUST 2016

INSERT

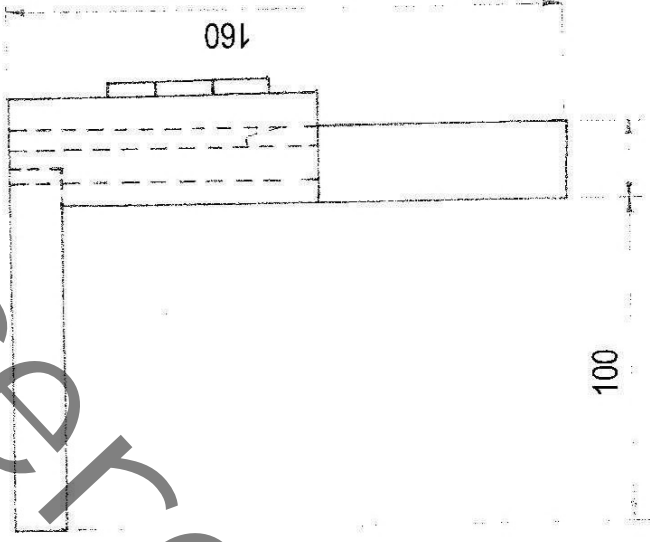
Time: 3 hours

Marks: 100



DROP LEAF SOFA TABLE

FIGURE 1



ALL DIMENSIONS ARE IN MM
DROP-LEAF SOFA TABLE

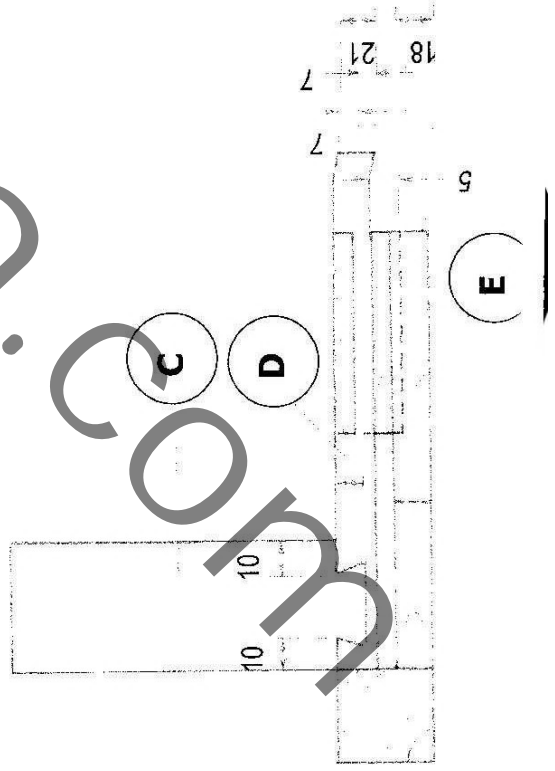
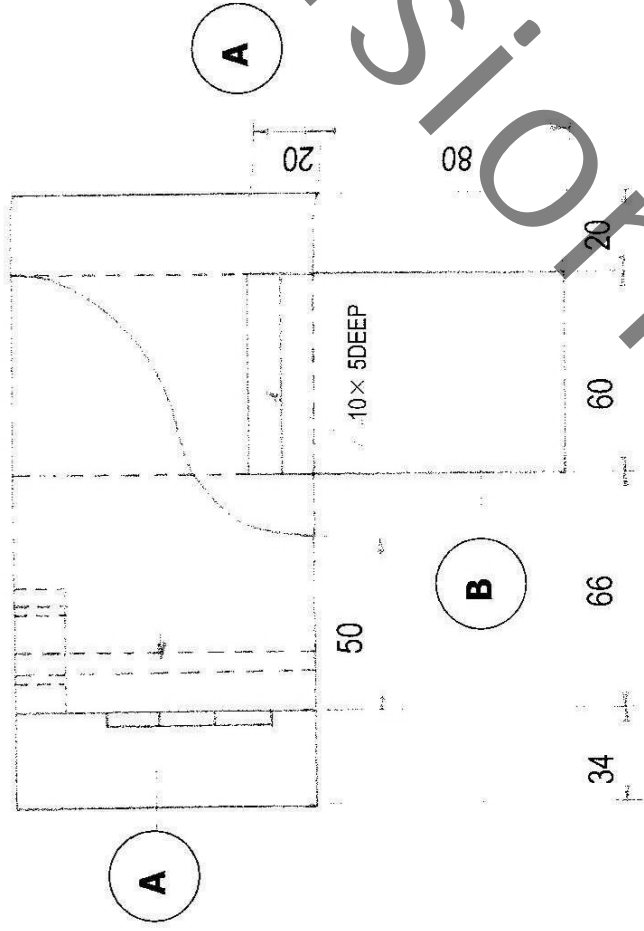


FIGURE 2