

## **Preamble for Fashion and Fabrics (6050)**

The Examinations Council of Zambia has made adjustments to the assessment of **Fashion and Fabrics** at Grade 12 level so as to be in line with the revised **Fashion and Fabrics** Senior Secondary School Syllabus of 2013 developed by Curriculum Development Centre (CDC) of the Ministry of General Education.

### **Purpose**

The purpose of the Grade 12 Fashion and Fabrics assessment is to measure candidates' knowledge and understanding, application of skills and values acquired from the subject. It will also serve the purpose of certification and placement.

### **Assessment Objectives**

Candidates will be assessed against the following objectives:

#### **Knowledge and understanding**

1. Demonstrate knowledge and skills in identifying groups of stitches.
2. Identify tools and equipment used in Fashion and Fabrics.
3. Exhibit knowledge and understanding in designing, sketching and use of paper patterns.
4. Demonstrate knowledge and understanding of the parts and operations of the sewing machine.

#### **Application of skills**

1. Show understanding of the principles and practices in Fashion and Fabrics.
2. Demonstrate the correct handling and care of different fabrics.
3. Explain and demonstrate the use of various equipment in garment construction.
4. Make articles according to specifications.
5. Use available knowledge, local resources and skills to generate income.
6. Implement entrepreneurship projects.

### Test Design

The Fashion and Fabrics examination will have three papers, Papers 1, 2 and 3.

Paper Name	Paper Code	Duration	Mark Allocation	Weight
Fashion and Fabrics P.1 (Theory)	6050/1	2 hours	80	40%
Fashion and Fabrics P. 2 (Practical)	6050/2	3 hours	80	40%
Fashion and Fabrics P. 3 (Project)	6050/3	2 years	40	20%
<b>Total</b>			<b>200</b>	<b>100%</b>

Candidate Name \_\_\_\_\_

Centre Number				Candidate Number									

## EXAMINATIONS COUNCIL OF ZAMBIA

### Examination for School Certificate Ordinary Level

## Fashion and Fabrics

6050/1

### Paper 1 Theory

Additional materials:  
Answer Booklet  
Coloured pencils  
Ruler  
Small piece of fabric, needle and thread.

**Time: 2 hours**

### Instructions to Candidates

- 1 Write your name, centre number and candidate number in the spaces at the top of this page and on all separate Answer Booklets.

#### Section A

- 2 Answer **all** questions. Write your answers in the spaces provided on the question paper.

#### Section B

- 3 Answer **any three** questions. Write your answers on the separate Answer Booklet provided.
- 4 At the end of the examination:
  - (i) fasten any separate Answer Booklet used securely to the question paper,
  - (ii) enter the numbers of the Section B questions you have answered in the grid below.

### Information for Candidates

The number of marks is given in brackets [ ] at the end of each question or part question.

The insert is for use for question 1.

You are advised to spend not more than 40 minutes on Section A.

You should illustrate your answers by means of clear, bold diagrams wherever possible. You may use a needle and thread and a small piece of fabric to help in making drawings of stitches. This fabric should not be handed in with your answers.

You may use the silhouette when preparing outlines for fashion sketches.

**Cell phones are not allowed in the examination room.**

Candidate's Use	Examiner's Use
Section A	
Section B	
Total	

**SECTION A (26 Marks)**

**Answer all parts of question 1.**

**Write your answers in the spaces provided on the question paper.**

**1 (a)** Refer to the insert.

**(i)** Name **one** style feature using at least two words.

..... [1]

**(ii)** Mention **one** type of seam that can be used on the style feature.

..... [1]

**(iii)** Identify a fastener suitable for the style feature.

..... [1]

**(b)** The pattern suggests using gingham or babycord fabrics to make the skirt in the insert. Explain:

**(i)** One advantage of gingham.

..... [1]

**(ii)** One disadvantage of gingham.

..... [1]

**(iii)** Estimate the amount of fabric needed to make the view in the insert.

..... [1]

**(iv)** Describe the structure of babycord.

..... [1]

**(c)** Define the following terms:

**(i)** Fibre

.....

**(ii)** Yarn

.....

**(iii)** Filament

..... [3]

(d) Fill in the blank spaces.

Crossway strips are cut on ..... or ..... and  
should have a standard width of ..... [3]

(e) (i) Explain another use of gingham.

..... [1]

(ii) Explain the suitable type of fastening best used on overlapping openings.

..... [1]

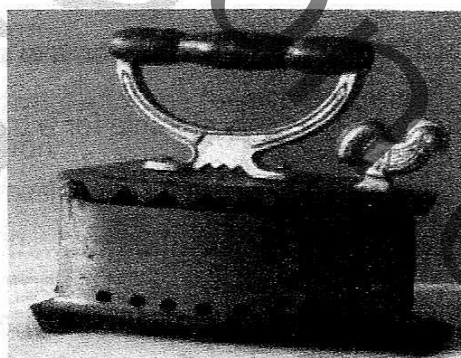
(iii) Show how mercerizing can be applied to cotton fabrics.

..... [1]

(iv) State why it is not advisable to use tapes and ribbons on baby clothes.

..... [1]

(f) (i) Identify the diagram below.



..... [1]

(ii) A tracing wheel is for transferring pattern markings and a stiletto is for

..... [1]

(iii) Describe the use of a metal magnet.

..... [1]



- (g) (i) On the pattern for the front bodice show the following pattern markings:-

- (1) Fitting line
- (2) Dart
- (3) Straight grain

[3]



- (ii) State **one** point to consider when choosing becoming clothes (current fashion).

.....  
.....

[1]

- (iii) Describe an accessory suitable for a traditional outfit.

.....  
.....

[1]

- (iv) Explain why culture/tradition is important when choosing clothes.

.....  
.....

[1]

**[26 marks]**

**SECTION B (54 Marks)**

**Answer any three (3) questions from this section on the separate the Answer Booklet provided.**

- 2** (a) (i) Define natural fibres. [1]  
 (ii) State the origins of woollen fibres. [1]  
 (iii) Describe one property of woollen fibres. [1]  
 (iv) Explain why wool is blended with other fibres. [1]  
 (b) (i) State **two** uses of wool. [2]  
 (ii) Outline **two** advantages and two disadvantages of wool. [4]  
 (c) (i) Sketch and label the front and back of a jersey. [4]  
 (ii) Compare and contrast a woollen knitted garment and a crotchet garment. [4]

**[18 marks]**

- 3** (a) Draw and name **four** types of sleeves. [4]  
 (b) (i) Name **one** type/class of collars. [1]  
 (ii) Give **one** example of a collar in the class you have chosen. [1]  
 (c) (i) State the type of garment where the named collar in **b(ii)** can be used. [4]  
 (ii) Outline the similarities between shirring and smocking. [3]  
 (iii) State the differences between pressing and ironing. [3]  
 (d) What is the importance of body measurements in garment construction? [2]

**[18 marks]**

- 4** (a) (i) Name **one** example of a silk fabric. [1]  
 (ii) Describe **one** use of the following fabrics.  
 (1) Chiffon  
 (2) Damask  
 (3) Satin  
 (4) Georgette  
 (5) Silk tussah [5]  
 (b) (i) Outline precautions to take when removing stains. [4]  
 (ii) Relate the following fabrics finishes to fabrics.  
 (1) Shrink resistance  
 (2) Crease resistance  
 (3) Moth proofing  
 (4) Proban (flame proofing) [4]  
 (c) Analyse the process of calendaring and trubernising. [4]

**[18 marks]****[Turn over]**

- 5 (a) An adequate wardrobe is one that includes garments, accessories and other articles needed for a person to be suitably and attractively dressed.
- (i) Explain **three** effects of good grooming. [3]
  - (ii) Striped fabrics can be used in an interesting way. Draw and clearly label a garment which uses striped fabric to good effect. [5]
- (b) Outline **six** points to consider when planning a wardrobe [6]
- (c) How would you establish that prices are reasonable when buying children's clothes? [4]

[18 marks]

- 6 (a) Needlework is a skill which requires knowledge and understanding.
- (i) What would cause the following faults in machine stitching?
    - (1) Uneven stitching
    - (2) Stitches missed
    - (3) Broken needles
    - (4) Top thread breaks [4]
  - (ii) Give **two** safety rules on the following:-
    - (1) Dress maker's pins
    - (2) Pressing iron [2]
- (b) Show the use of the following tools:
  - (1) Metre stick;
  - (2) Tracing wheel and carbon paper;
  - (3) Tailor's chalk;
  - (4) Buttonhole scissors;
  - (5) Bodkin;
  - (6) Sleeve board. [6]
- (c) (i) Write down **four** points to consider when choosing an electric sewing machine. [4]
- (ii) Justify the inclusion of the following in a first aid box.
  - (1) Antiseptic cream/ointment
  - (2) Plaster [2]

[18 marks]



- 7 (a) (i) Mention **two** types of paper patterns. [2]
- (ii) Explain **two** disadvantages of homemade paper patterns. [2]
- (b) (i) How would you ensure that the garment is ...
- (1) a good buy?
- (2) a good fit?
- (3) of good texture?
- (4) of suitable style for figure type? [4]
- (ii) Outline **four** basic body measurements [4]
- (c) (i) Compile information found on ...
- (1) front of commercial paper pattern.
- (2) back of commercial paper pattern. [4]
- (ii) Differentiate between garment ease and designing ease. [2]

[18 marks]

**EXAMINATIONS COUNCIL OF ZAMBIA**

**Examination for School Certificate Ordinary Level**

**Fashion and Fabrics**

**Paper 1 Theory**

**6050/1**

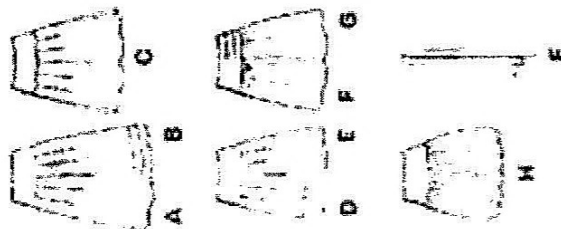
**INSERT**

**Time: 2 hours**



Contact Us! View our website and online catalog [www.simplicity.com](http://www.simplicity.com) Send us email [info@simplicity.com](mailto:info@simplicity.com) Call us toll-free in U.S. & Canada 1-888-688-2700

**6 PIECES/PIEZAS**  
Mesures et instructions  
de couture en français &  
anglais de l'ensemble.



MISS'N' SIX SIZES IN ONE	1	2	3	4	5	6
Size	34	36	38	40	42	44
Bust	31 1/2	33 1/2	35 1/2	37 1/2	39 1/2	41 1/2
Waist	24	25	26 1/2	28	30	32
Hip	33 1/2	34 1/2	36	37 1/2	39 1/2	41 1/2
Back neck to arm	15 1/2	16	16 1/2	17 1/2	18 1/2	19

A, B - Bust 1" below waist	2 1/2	2 1/2	2 1/2	2 1/2	2 1/2	2 1/2
C - Skirt 1" below waist	1 1/2	1 1/2	1 1/2	1 1/2	1 1/2	1 1/2

C, D - Skirt 1" below waist	1 1/2	1 1/2	1 1/2	1 1/2	1 1/2	1 1/2
E, F - Sleeve 1" below arm	1 1/2	1 1/2	1 1/2	1 1/2	1 1/2	1 1/2

G - Sleeve 1" below arm	1 1/2	1 1/2	1 1/2	1 1/2	1 1/2	1 1/2
H - Sleeve 1" below arm	1 1/2	1 1/2	1 1/2	1 1/2	1 1/2	1 1/2

I - Sleeve 1" below arm	1 1/2	1 1/2	1 1/2	1 1/2	1 1/2	1 1/2
J - Sleeve 1" below arm	1 1/2	1 1/2	1 1/2	1 1/2	1 1/2	1 1/2

K - Sleeve 1" below arm	1 1/2	1 1/2	1 1/2	1 1/2	1 1/2	1 1/2
L - Sleeve 1" below arm	1 1/2	1 1/2	1 1/2	1 1/2	1 1/2	1 1/2

M - Sleeve 1" below arm	1 1/2	1 1/2	1 1/2	1 1/2	1 1/2	1 1/2
N - Sleeve 1" below arm	1 1/2	1 1/2	1 1/2	1 1/2	1 1/2	1 1/2

O - Sleeve 1" below arm	1 1/2	1 1/2	1 1/2	1 1/2	1 1/2	1 1/2
P - Sleeve 1" below arm	1 1/2	1 1/2	1 1/2	1 1/2	1 1/2	1 1/2

Q - Sleeve 1" below arm	1 1/2	1 1/2	1 1/2	1 1/2	1 1/2	1 1/2
R - Sleeve 1" below arm	1 1/2	1 1/2	1 1/2	1 1/2	1 1/2	1 1/2

S - Sleeve 1" below arm	1 1/2	1 1/2	1 1/2	1 1/2	1 1/2	1 1/2
T - Sleeve 1" below arm	1 1/2	1 1/2	1 1/2	1 1/2	1 1/2	1 1/2

U - Sleeve 1" below arm	1 1/2	1 1/2	1 1/2	1 1/2	1 1/2	1 1/2
V - Sleeve 1" below arm	1 1/2	1 1/2	1 1/2	1 1/2	1 1/2	1 1/2

JEUNE FEMME: PATRON SIX TAILLES	1	2	3	4	5	6
Size	34	36	38	40	42	44
Bust	31 1/2	33 1/2	35 1/2	37 1/2	39 1/2	41 1/2
Waist	24	25	26 1/2	28	30	32
Hip	33 1/2	34 1/2	36	37 1/2	39 1/2	41 1/2
Back neck to arm	15 1/2	16	16 1/2	17 1/2	18 1/2	19

A, B - Bust 1" below waist	2 1/2	2 1/2	2 1/2	2 1/2	2 1/2	2 1/2
C - Skirt 1" below waist	1 1/2	1 1/2	1 1/2	1 1/2	1 1/2	1 1/2

C, D - Skirt 1" below waist	1 1/2	1 1/2	1 1/2	1 1/2	1 1/2	1 1/2
E, F - Sleeve 1" below arm	1 1/2	1 1/2	1 1/2	1 1/2	1 1/2	1 1/2

G - Sleeve 1" below arm	1 1/2	1 1/2	1 1/2	1 1/2	1 1/2	1 1/2
H - Sleeve 1" below arm	1 1/2	1 1/2	1 1/2	1 1/2	1 1/2	1 1/2

I - Sleeve 1" below arm	1 1/2	1 1/2	1 1/2	1 1/2	1 1/2	1 1/2
J - Sleeve 1" below arm	1 1/2	1 1/2	1 1/2	1 1/2	1 1/2	1 1/2

K - Sleeve 1" below arm	1 1/2	1 1/2	1 1/2	1 1/2	1 1/2	1 1/2
L - Sleeve 1" below arm	1 1/2	1 1/2	1 1/2	1 1/2	1 1/2	1 1/2

M - Sleeve 1" below arm	1 1/2	1 1/2	1 1/2	1 1/2	1 1/2	1 1/2
N - Sleeve 1" below arm	1 1/2	1 1/2	1 1/2	1 1/2	1 1/2	1 1/2

O - Sleeve 1" below arm	1 1/2	1 1/2	1 1/2	1 1/2	1 1/2	1 1/2
P - Sleeve 1" below arm	1 1/2	1 1/2	1 1/2	1 1/2	1 1/2	1 1/2

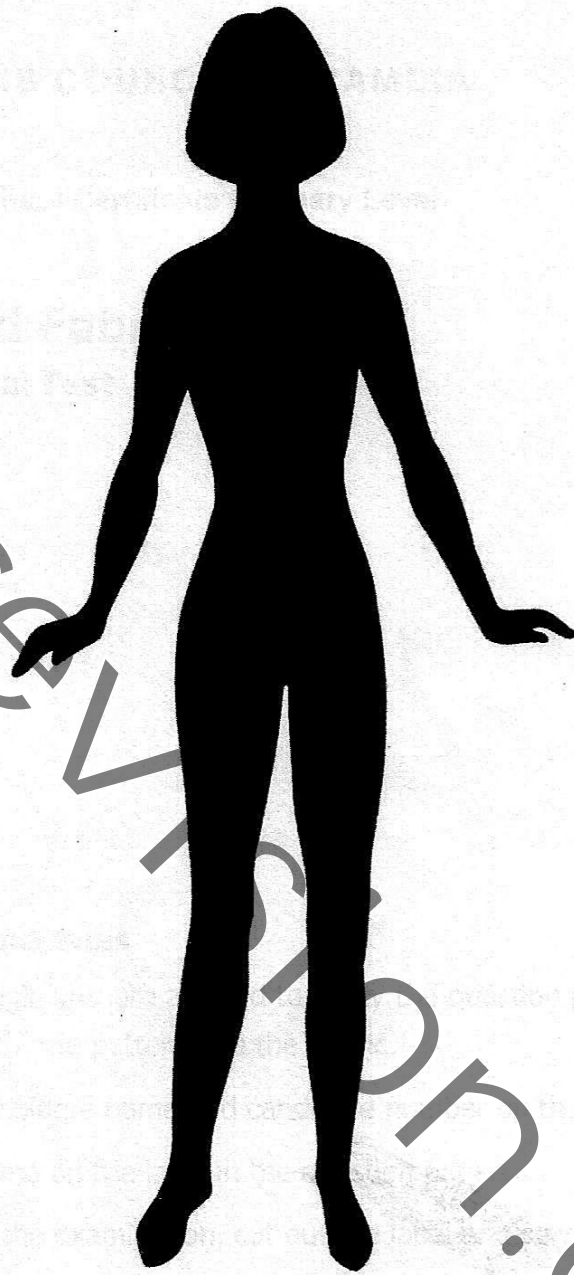
Q - Sleeve 1" below arm	1 1/2	1 1/2	1 1/2	1 1/2	1 1/2	1 1/2
R - Sleeve 1" below arm	1 1/2	1 1/2	1 1/2	1 1/2	1 1/2	1 1/2

S - Sleeve 1" below arm	1 1/2	1 1/2	1 1/2	1 1/2	1 1/2	1 1/2
T - Sleeve 1" below arm	1 1/2	1 1/2	1 1/2	1 1/2	1 1/2	1 1/2

U - Sleeve 1" below arm	1 1/2	1 1/2	1 1/2	1 1/2	1 1/2	1 1/2
V - Sleeve 1" below arm	1 1/2	1 1/2	1 1/2	1 1/2	1 1/2	1 1/2

W - Sleeve 1" below arm	1 1/2	1 1/2	1 1/2	1 1/2	1 1/2	1 1/2
X - Sleeve 1" below arm	1 1/2	1 1/2	1 1/2	1 1/2	1 1/2	1 1/2

**6594**  
SIZE A B-18  
FR 36-46  
EUR 34-44



You may use this silhouette when preparing outlines for fashion sketches.