

EXAMINATIONS COUNCIL OF ZAMBIA

Examination for General Certificate of Education Ordinary Level

Metalwork

6040/2

Paper 2 Practical Test

Tuesday

9 AUGUST 2016

3 hours

Additional materials:

As listed in Instructions to Supervisors

Instructions to Candidates

Check that the following materials have been provided;

- 1 One piece $30 \times 3 \times 122$ mm long. One end squared.
- 2 One piece $30 \times 6 \times 45$ mm. Both ends squared.
- 3 One piece $30 \times 3 \times 65$ mm long. One end squared.
- 4 One piece $\varnothing 8 \times 100$ mm long, turned on the lathe.
- 5 One piece $\varnothing 6 \times 50$ mm long. Both ends squared.
- 6 One piece $\varnothing 5 \times 25$ mm long.
- 7 One snaphead rivet $\varnothing 5 \times 15$ mm long in any suitable material.
- 8 One clear and clean plastic bag in which to enclose the work.
- 9 Two tie-on tags one to be attached to the work and the other to be tied to the plastic bag.

Information for Candidates

At the end of the examination, candidates **must**:

- 1 Assemble work pieces. Where work pieces can not be assembled, fasten them together using a string.
- 2 Attach a tag with your name in full, examination number, centre number, name of school and date.
- 3 Enclose your work pieces in the plastic bag.
- 4 Fasten the bag and attach a second tag.
- 5 Hand in your work to the Supervisor (invigilator).

PRACTICAL TEST

Using the material prepared prior to the examination, each candidate is to make the **HAND VICE** shown in the working drawings on the insert. Modifications have been made for examination purposes.

All dimensions are in millimetres.

The following materials are required:

- 1 One piece $30 \times 3 \times 122$ mm long. One end squared.
- 2 One piece $30 \times 6 \times 45$ mm. Both ends squared.
- 3 One piece $30 \times 3 \times 65$ mm long. One end squared.
- 4 One piece $\varnothing 8 \times 100$ mm long, turned on the lathe as shown in figure 1.
- 5 One piece $\varnothing 6 \times 50$ mm long. Both ends squared.
- 6 One piece $\varnothing 5 \times 25$ mm long as shown in figure 2.
- 7 One snaphead rivet $\varnothing 5 \times 15$ mm long in any suitable material.

Apart from the usual bench tools, the following should also be provided:

- (a) Drill bits – $\varnothing 4$, $\varnothing 5$ and $\varnothing 6.5$.
- (b) Radius gauge – R3 and R15.
- (c) Taps and dies – M5 \times 0.8 and M8 \times 1.25.

WORKING PROCEDURE

Part 1: Drill all holes, make the slot and tap the thread before bending.

Part 5: Flatten one end and fit in Part 4 before flattening the other end.

Part 3 to Part 1: Rivet together after bending Part 1.

EXAMINATIONS COUNCIL OF ZAMBIA

Examination for School Certificate Ordinary Level

Metalwork

6040/2

PAPER 2 Practical Test

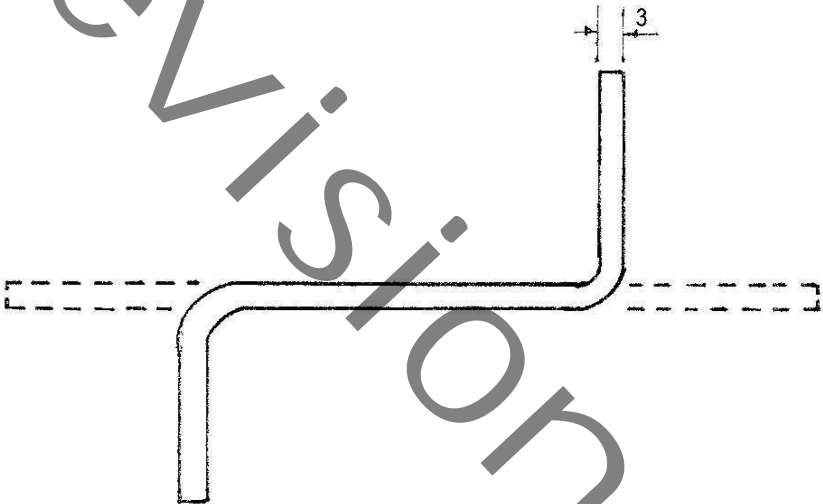
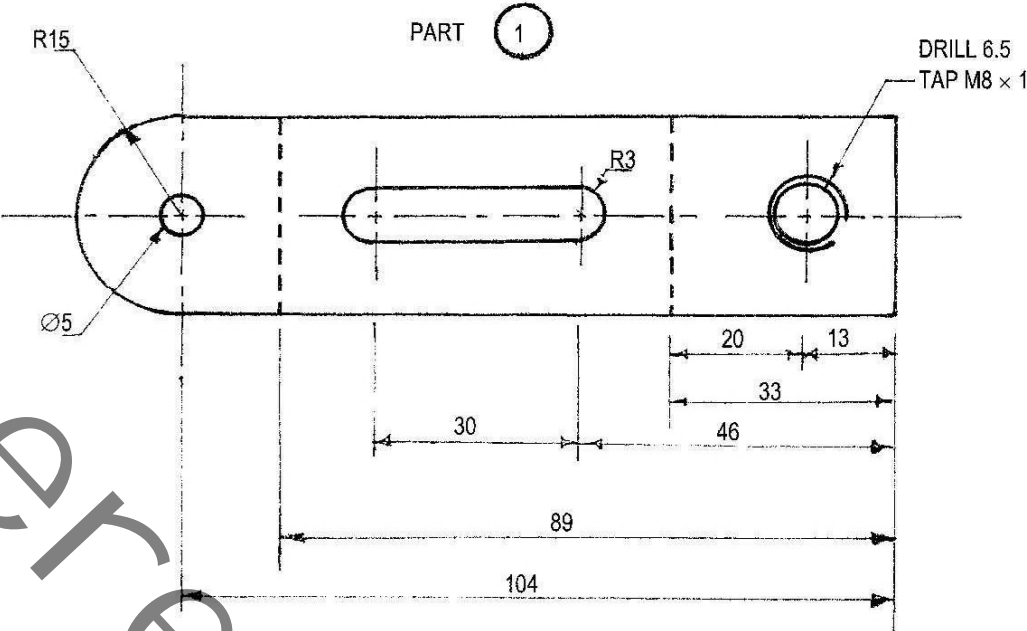
Tuesday

9 AUGUST 2016

Time: 3 hours

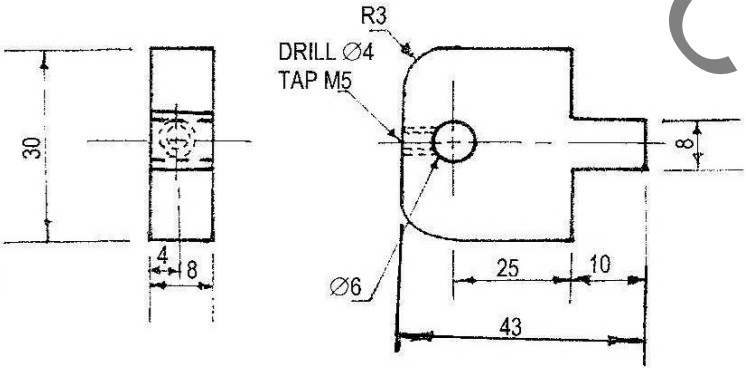
MARKS: 100

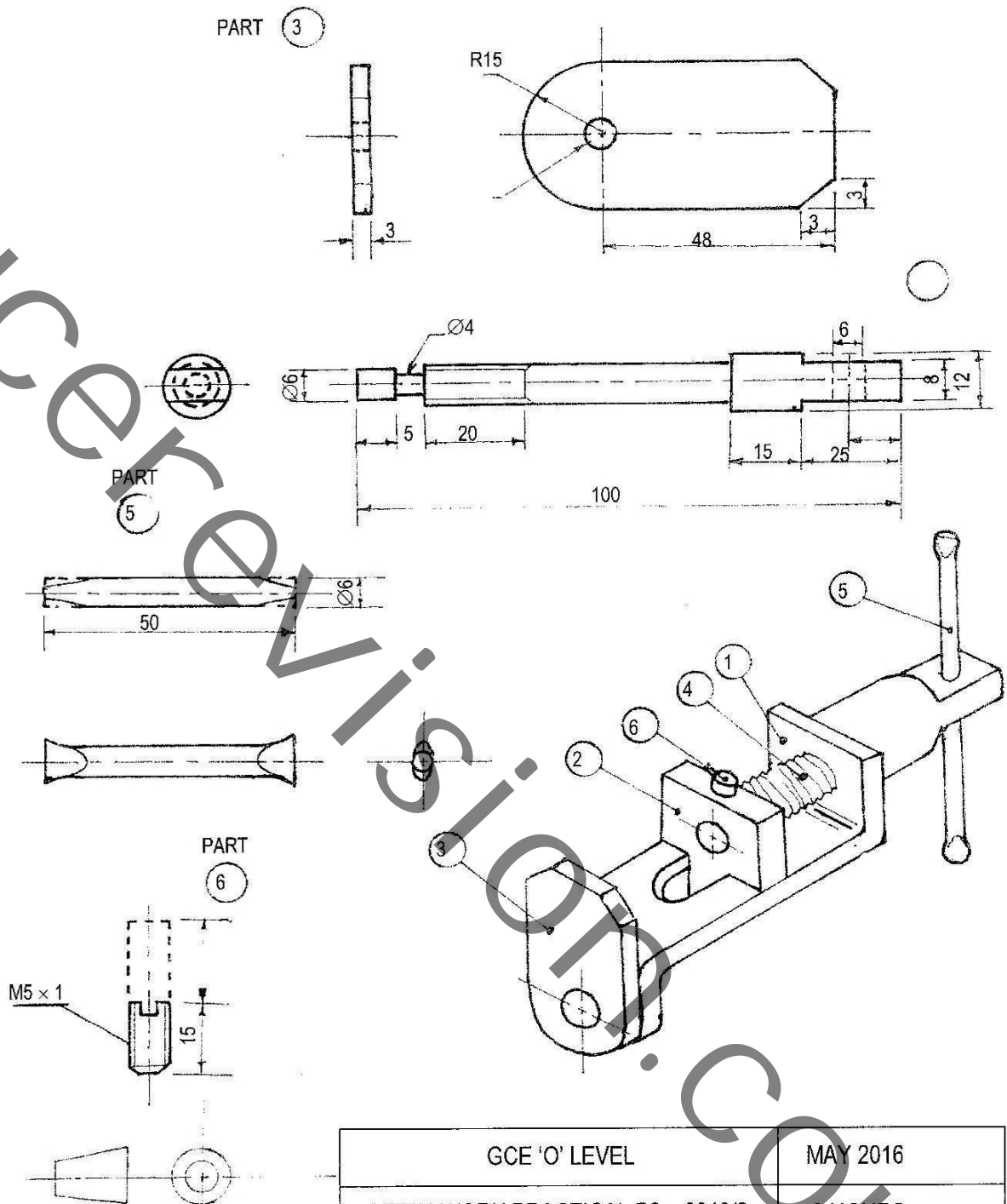
INSERT



PART

2





GCE 'O' LEVEL	MAY 2016
METALWORK PRACTICAL P2 – 6040/2	3 HOURS
HAND VICE	
EXAMINATIONS COUNCIL OF ZAMBIA – LUSAKA	