

GENERAL CERTIFICATE OF EDUCATION BOARD

General Certificate of Education Examination

Geography 3
0750

JUNE 2023

ADVANCED LEVEL

Subject Title	Geography
Paper No./Title	Paper 3
Subject Code No.	0750

THREE AND A QUARTER HOURS

Answer **FOUR QUESTIONS** in all.

Answer question **ONE** and three others, choosing **ONE** question from **SECTION B** and **TWO** from **SECTION C**.

Question **ONE** carries thirty-one marks and the rest carry twenty-three marks each.

Only the **required** number of questions will be marked.

In answering questions on this paper, you are encouraged to refer to your own field and practical work where relevant. Credit will be awarded for such references.

Candidates are advised **NOT** to attempt the questions on field investigations if such an exercise has not been carried out.

Marks will be awarded for well annotated maps and diagrams where these are relevant.

You are reminded of the necessity for good English and orderly presentation in your answers.

Calculators are allowed.

Materials required: Topographic map, Graph Paper and Two outline maps of Cameroon.

SECTION A

MAP WORK

1. Study the topographic map extract of **Ndop and Environs at 1:50,000** provided and answer the questions that follow.

- a)
 - (i) Briefly contrast the relief and drainage characteristics east and west of Easting 56 of the map area. (5 marks)
 - (ii) Using map evidence only, identify and explain the difficulties posed by the relief and drainage characteristics in the development of road network in the map area. (6 marks)
 - (iii) Suggest two strategies that can be adopted to overcome the physical challenges of road network development in the map area. (4 marks)
 - b) Using map evidence only;
 - (i) Briefly describe the possibility of practicing irrigation farming and generating Hydro-electric power in the Ndop area. (4 marks)
 - (ii) Suggest TWO physical problems faced by rice farmers in the area and TWO possible solutions. (6 marks)
 - c)
 - (i) Calculate the sinuosity index of the river Noun located north of the map from 631440 to 646400. (4 marks)
 - (ii) State the significance of your result or answer. (2 marks)
- (31 marks)**

SECTION B

FIELDWORK AND TECHNIQUES

2. Based on fieldwork you have carried out **either in Physical or Human Geography**, choose **ONE** of the following topics:

- (i) Vegetation characteristics;
 - (ii) Coastal processes;
 - (iii) Channel flow/ characteristics;
 - (iv) Functional segregation;
 - (v) Urban land use/ characteristics;
 - (vi) Rural land use/ characteristics.
- a) Using a sketch map, locate the area of your fieldwork investigation. (4 marks)
 - b) State your objective and hypothesis that guided your investigation of the topic. (2 marks)
 - c) State the significance of the tools you used in the investigation. (3 marks)
 - d) Describe how your data was collected. (4 marks)
 - e) How was data analyzed and presented? (5 marks)
 - f) What were your findings in relation to the hypothesis and conclusion? (3 marks)
 - g) Of what importance was the fieldwork result to your community? (2 marks)
- (23 marks)**

3. Study Table 1 showing temperature and rainfall data for a station in Equatorial climate (Kuala Lumpur).

Month	J	F	M	A	M	J	J	A	S	O	N	D
Temp(°C)	26	26	27	27	27	27	26	26	26	26	26	27
Rainfall in cm	170	170	236	279	216	127	104	157	185	274	257	231

Source: Adapted from Certificate Physical and Human Geography, 3rd Edition by Goh Cheng Leong.

- Using a bar and line graph (climograph), represent the information on the table above. (12 marks)
 - State TWO advantages of using the cartographic technique in a) above.. (3 marks)
 - Explain why the climatic station experiences two distinct rainfall maxima within the year?(5 marks)
 - Why is temperature fairly constant throughout the year? (3 marks)
- (23 marks)**

SECTION C:

CAMEROON

- Identify **ONE** highland and **ONE** lowland crossed by the Cameroon Volcanic Line and briefly explain the relief characteristics of the lowland (5 marks)
 - Illustrate how the physical environment has influenced the spatial pattern of food crop farming systems in Cameroon. (10 marks)
 - Discuss **TWO** socio-economic factors that hinder agricultural development in Cameroon and bring out the respective measures that have been put in place to solve the problems. (8 marks)

(23 marks)
- On the outline map provided, locate the different vegetation types in Cameroon and analyse their resources. (6 marks)
 - Describe **TWO** main natural and **TWO** man-made tourist resources in Cameroon. (8 marks)
 - Briefly state **THREE** hindrances to tourism development in Cameroon (3 marks)
 - Explain **THREE** socio-economic importance of the tourist industry in the economy of Cameroon. (6 marks)

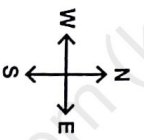
(23 marks)
- Contrast the climatic characteristics of the South Cameroon Low Plateau and that of the Adamawa plateau. (6 marks)
 - Discuss agricultural and energy resources as bases for industrialization in Cameroon. (10 marks)
 - Explain **THREE** efforts that have been made to promote industrial growth in Cameroon. (7 marks)

(23 marks)
- Examine the characteristics of the zonal soil type of the South Cameroon Low Plateau. (8 marks)
 - Briefly explain **THREE** measures adopted by the government of Cameroon to combat rural exodus. (6 marks)
 - Suggest **THREE** ways that the government and local population can adopt to manage floods in Cameroon. (9 marks)

(23 marks)

GO BACK AND CHECK YOUR WORK

MAP EXTRACT OF NDOP AND ENVIRON



KEY

TRANSPORT NETWORK

Tarred Road

Earth Road

Foot Paths

Aerodrome

RIVER

Intermittent Stream

Swampy Land

Cultivated area: 1 without trees 2 with trees

Free Range Land

Eucalyptus Farms

Gallery Forest along Streams

Rice Plantation

Subsistence Farming

Livestock Ranch

Built up Area

Rural Habitats

School

Market

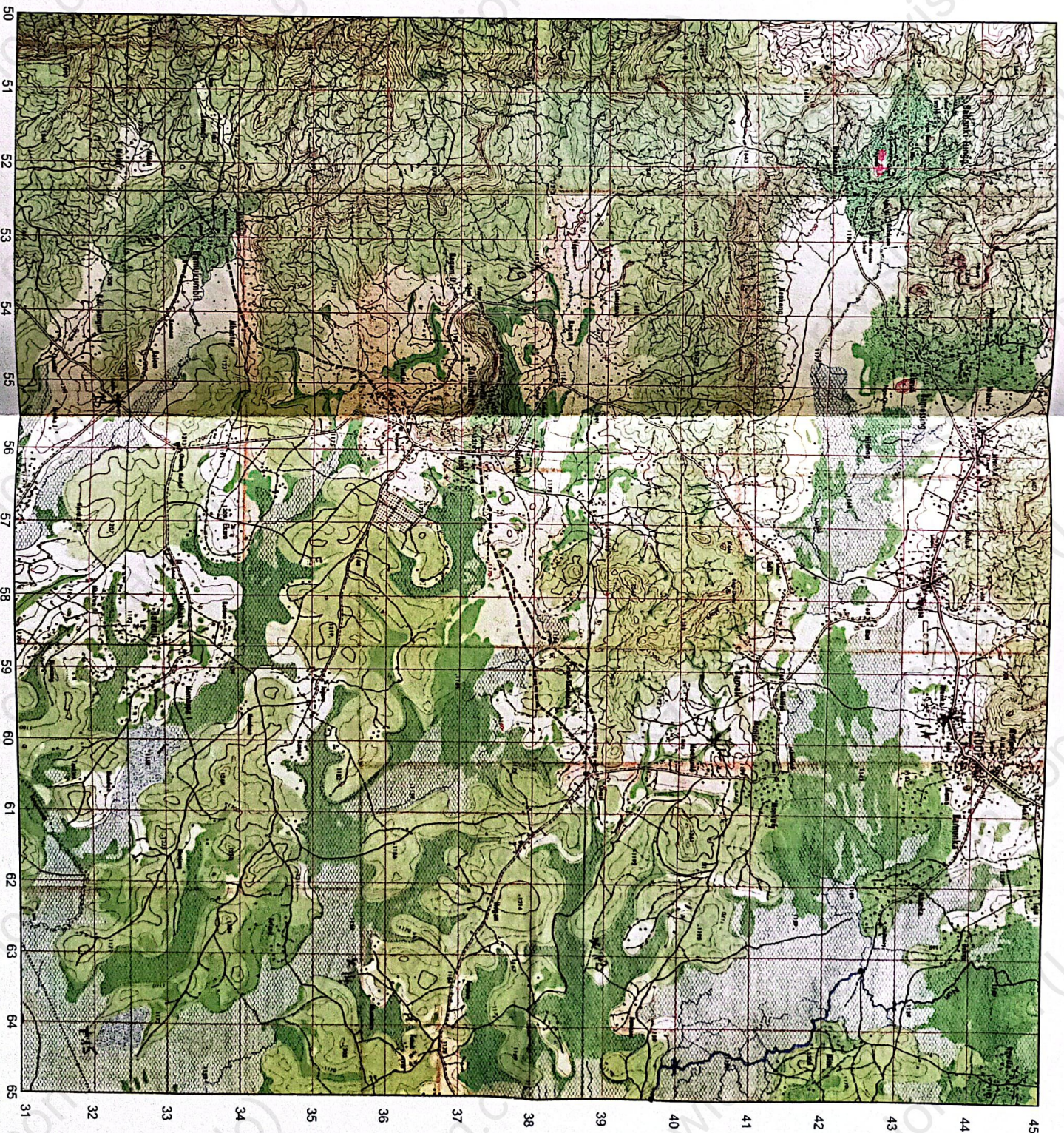
Hospital

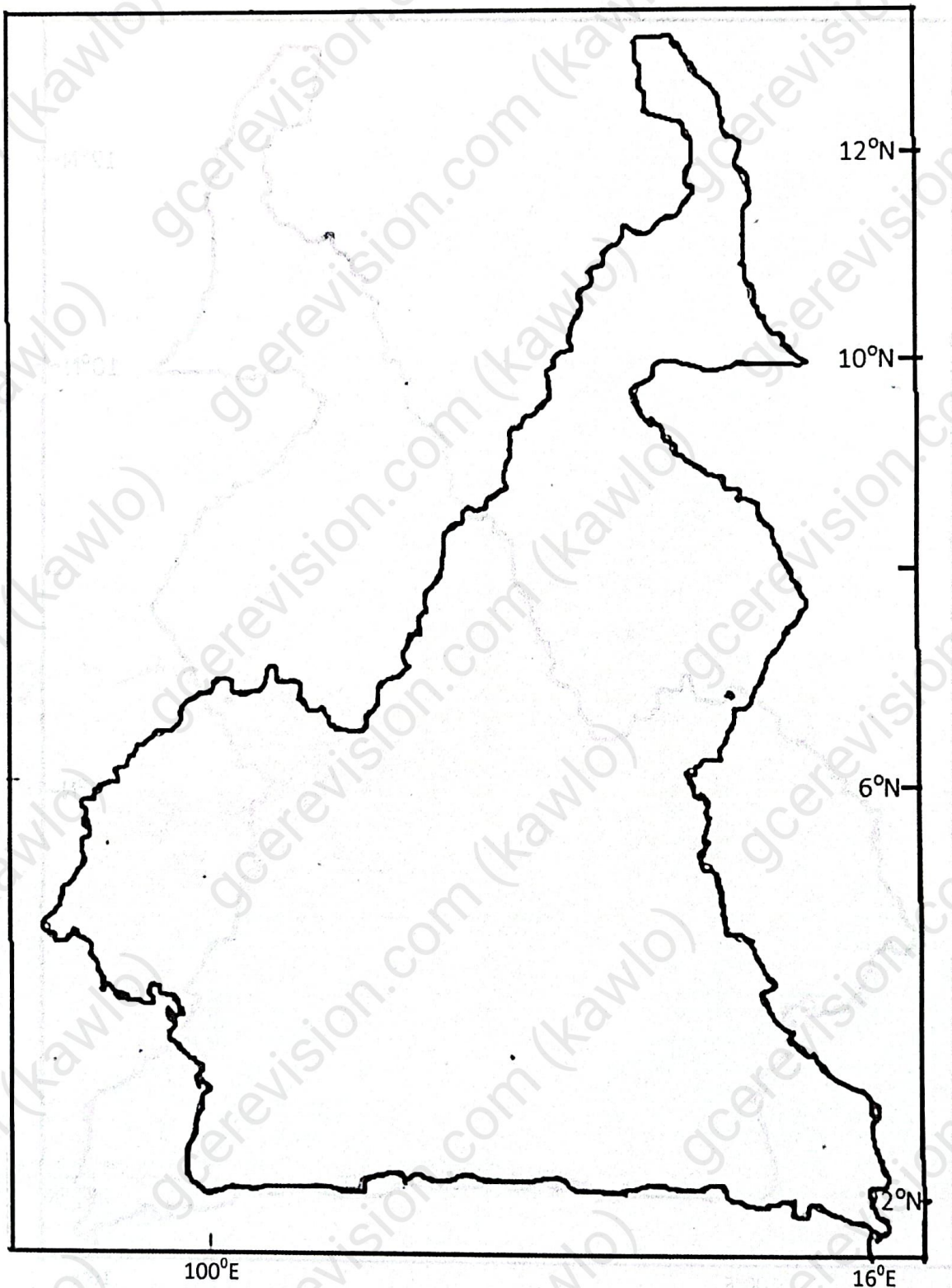
RELIEF

Contour Lines

Escarpment

Scale 1:50,000





Outline Map for questions 4, 5, 6 and 7