

GENERAL CERTIFICATE OF EDUCATION BOARD
General Certificate of Education Examination

JUNE 2025

ORDINARY LEVEL

Subject Title	Geography
Paper No.	Paper 2
Subject Code No.	0550

Duration: Two and a Half Hours

Answer FOUR Questions choosing ONE from each section.

Question ONE carries 30 marks. All the other Questions carry 20 marks each.

Each question that is sub-divided has the sub mark in brackets.

In questions involving calculations, all steps of the working MUST be shown.

If an outline MAP and/or GRAPH paper are used, they must be tied inside your answer booklet, opposite the written part of the answer.

NB-ONLY THE FIRST FOUR QUESTIONS ANSWERED WILL BE MARKED.

Calculators are Allowed

You are reminded of the necessity for good English and orderly presentation in your answers.

Turn over

SECTION A MAP WORK

This question constitutes 33.3% of the marks in the paper and 21.5% of the marks for the whole subject.
You are advised to spend about ONE HOUR on this question.

1. EITHER

Study the Map Extract of **MBANJOCK AND ITS ENVIRONS** (1:50,000) provided and answer the questions that follow:

- (a) Reduce the map extract by half the original size and insert the following:

- (i) R. Sanaga,
- (ii) Mbandjock town,
- (iii) Road N1
- (iv) 1 portion of evergreen forest.

Add a key and the new scale.

(11 marks)

- (b) (i) State the four figure Grid reference for the following spot heights:

- 587,
- 512,
- 602.

- (ii) Calculate the surface area of Land North West of R. Sanaga.

(3+4=7 marks)

- (c) Comment on the vegetation on the map extract.

(7 marks)

- (d) (i) Using your knowledge of Cameroon Geography, explain **FOUR** factors that might have influenced the establishment of the sugarcane plantation.

(8 marks)

Total (30 marks)

OR

- (a) In a chronological order, describe the procedure to reduce a map by half its original size and inset certain features.

(11 marks)

- (b) (i) Explain how the Four Figure Grid references of given features can be established.

- (ii) Outline in a correct order the steps to be followed (used) on how to calculate an area covered by an aspect on a map

(3+4=7 marks)

- (c) State the various aspects to be considered when describing vegetation on a map.

(4 marks)

- (d) (i) Using your knowledge of Cameroon Geography, explain factors that might have influenced the establishment of sugar cane plantation in Mbandjock.

- (ii) State **Four** functions and evidence that you may find in a locality like Mbandjock.

(4+4=8 marks)

Total = (30 marks)

SECTION B PHYSICAL GEOGRAPHY

2. a) (i) Explain **THREE** proofs to show that the Earth is spherical in shape.
 (ii) Distinguish between rotation of the earth and revolution of the earth. (6+2=8 marks)

- b) (i) Complete the table below by inserting the correct instrument for measurement and the unit of measurement for each element.

Element	Instrument	Unit of measurement
Rainfall		
Hours of Sunshine		
Temperature		
Atmospheric pressure		
Wind direction		

- (ii) State **TWO** precautions taken when setting a rain gauge. (5+2=7 marks)

c) State:

- **TWO** inputs of the hydrological cycle,
- **THREE** benefits of waste management.

(2+3=5 marks)
Total (20 marks)

3. State the following definitions:

- i. The breaking and moving apart of continents.
- ii. The processes by which solid, liquid and gaseous materials are forced into the earth's crust or are ejected onto the earth's surface.
- iii. The wrinkling or bending of the rocks of the earth's crust along defined lines or weaknesses.

- a) (i) State the appropriate geographical terms that suits each definition above.

- (ii) Rearrange the following geographical features under Erosional and Depositional features:
 George, Pothole, Zeugen, Deflation hallow, Yardang, Dunes, Braided chanel, Delta, Floodpalin, Loess. (Tabulate your work).

- (iii) Choose one depositional feature in a)(ii) above and describe its appearance. (3+5+2=10 marks)

- b) (i) State **TWO** characteristics of an ecosystem.

- (ii) On the world map provided, locate and name one area showing the following Biomes:

- i. The tropical Evergreen,
- ii. The tropical grassland.

(2+4=6 marks)

- c) State **FOUR** challenges faced by natural vegetation across the world today.

(4 marks)

Total (20 marks)

SECTION C HUMAN GEOGRAPHY

4. a) (i) Describe **THREE** indicators of under development.

- (ii) State **THREE** techniques of climate smart agriculture.

(6+3=9 marks)

- b) (i) The following are farming aspects: rainfall, soil fertility, weeding, spraying, meat processing, milk, vegetables, tubers, electricity, tilling.

Rearrange them under the headings inputs, processes and output.

- (ii) Outline **TWO** challenges of tropical agriculture.

(5+2=7 marks)

- c) Describe **TWO** importance of energy resources to an economy.

(4 marks)

Total (20 marks)

5. Study the following economic activities:

Forestry, automobile manufacture, shipbuilding, quarrying, fishing, food processing, administration, retailing, pharmaceutical, teaching, research, mining.

a) (i) Using a table, classify the above under: Primary industry, Secondary industry, Tertiary industry and Quaternary industry.

(ii) State **FOUR** characteristics of the NICs. (6+4=10 marks)

b) Briefly describe **THREE** differences between rural and urban settlements. (6 marks)

c) Give **TWO** advantages each of:

- Globalisation,
- Trade Blocs.

(2+2=4 marks)

Total (20 marks)

SECTION D

GEOGRAPHY OF CAMEROON

6. a) On the outline Map of Cameroon provided, locate and name the following:

- (i) A named area of high population density in the North region,
- (ii) The Limbe refinery,
- (iii) The Kimbi forest reserve,
- (iv) The Lagdo dam,
- (v) A named area with Sudan vegetation.

(5 marks)

b) Describe **THREE** measures taken by government to improve livestock farming in Cameroon. (6 marks)

c) (i) Explain **THREE** ways by which food loss can be reduced:

(ii) State **THREE** impacts of agriculture to the economy. (6+3=9 marks)

Total (20 marks)

7. a) Name:

(i) **TWO** drainage basins and **TWO** rivers of each of the basins.

(ii) One physical and one human touristic potential. (4+2=6 marks)

b) Describe **THREE** problems hindering industrial development in Cameroon. (6 marks)

c) Explain **TWO** measures aimed at conserving fish resources. (4 marks)

d) State **FOUR** efforts being made by the government to emerge by 2035. (4 marks)

Total (20 marks)

MBANDJOCK AND ITS ENVIRONS

KEY



Landcover/Landuse



Urban



Rural



Agricultural



Arable Land



Sugar cane Plantation



Market Gardening



Mixed Tree Cropping



Vegetation



Evergreen Forest



Wooded Savanna



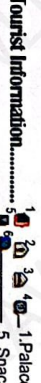
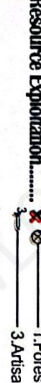
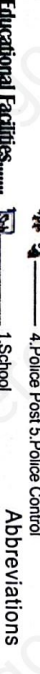
Parkland Savanna



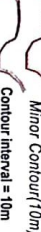
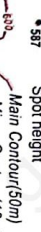
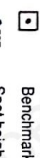
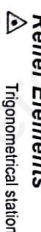
Road Infrastructure



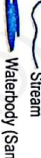
General Features



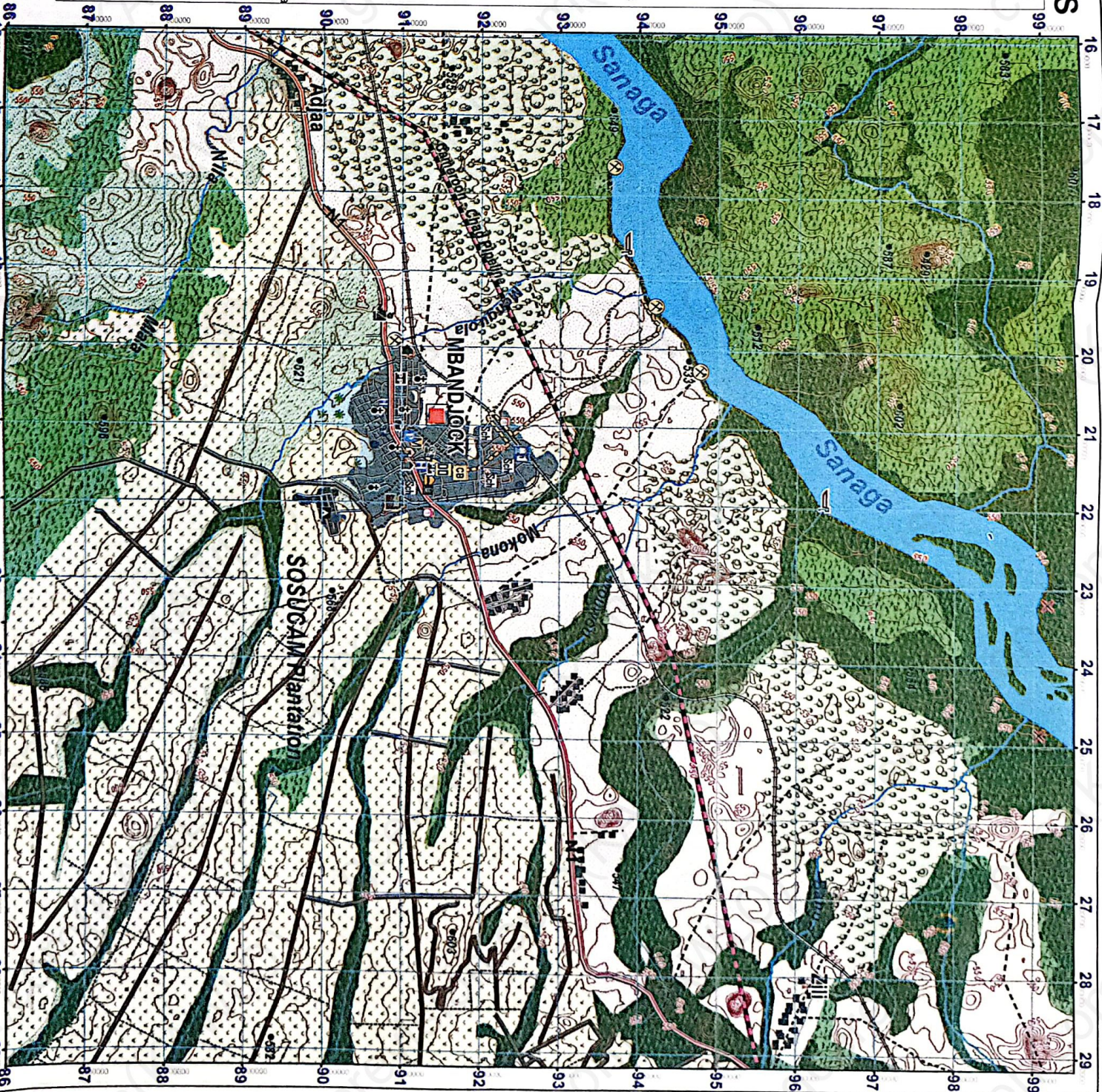
Relief Elements



Hydrography



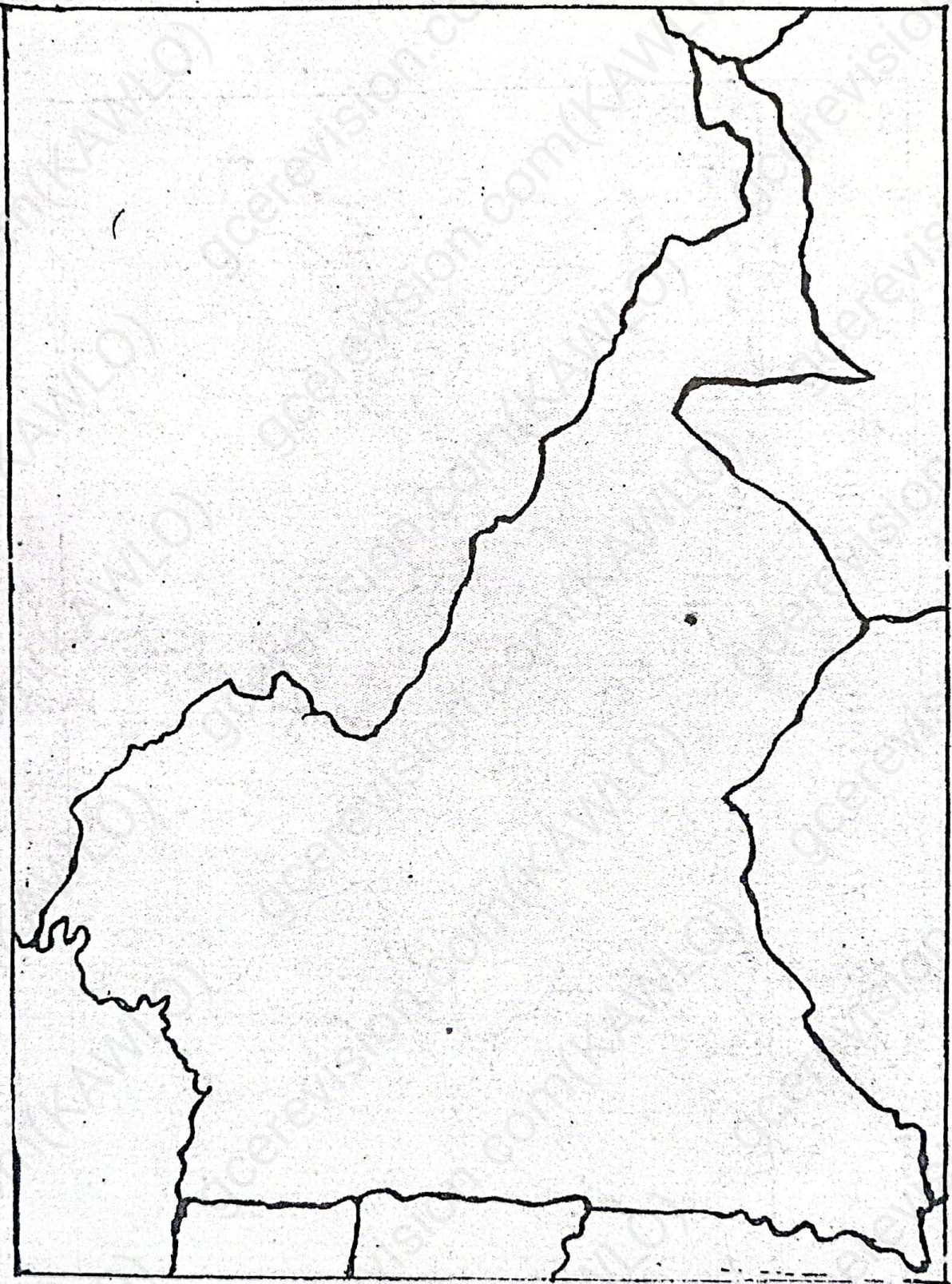
Administrative boundaries



Scale: 1:50,000

1 0.5 0 1 2 3 km

20cm represent 1km



Map of Cameroon

